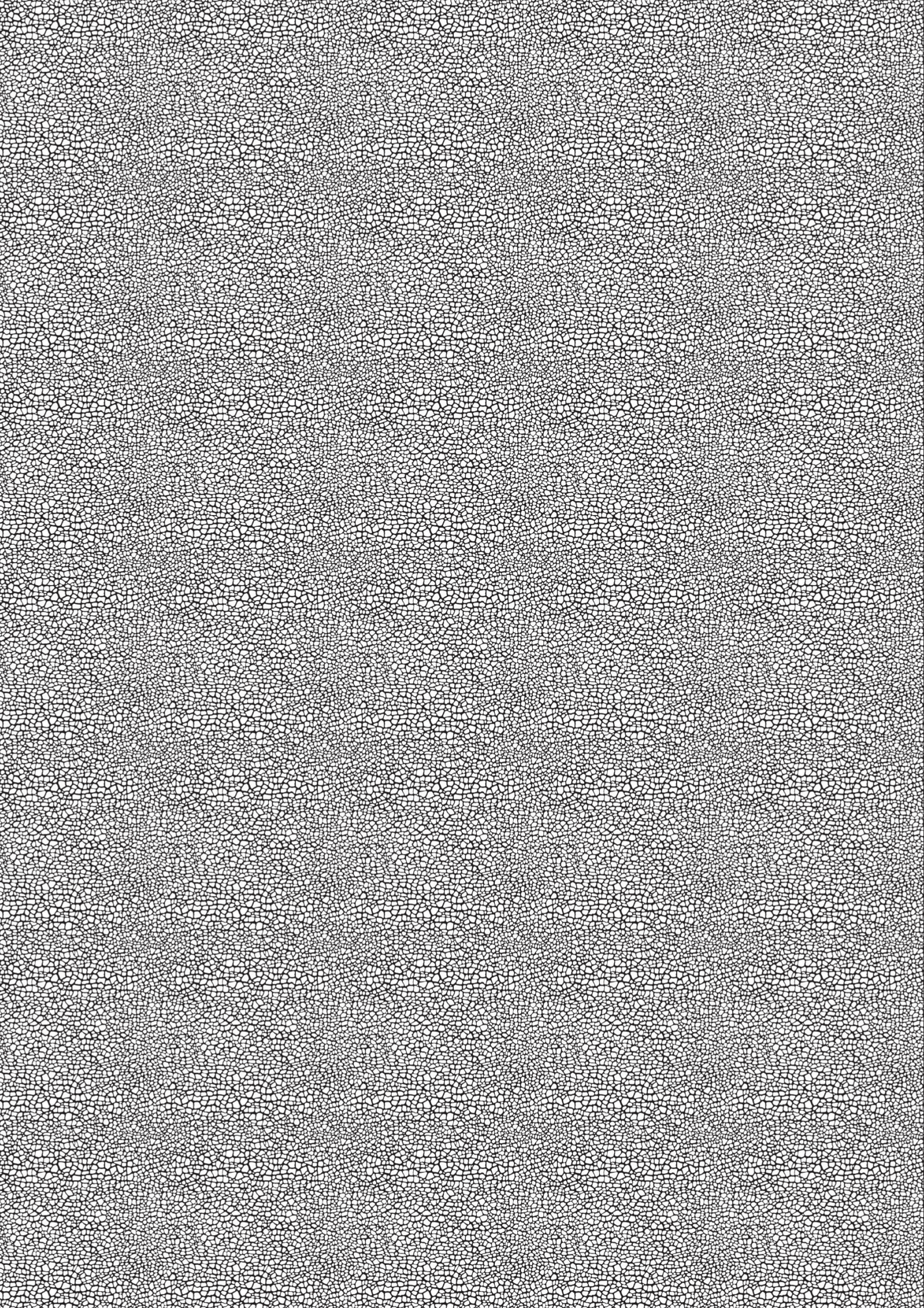


hello  
**BROOKLIN**  
AN EXCLUSIVE  
COLLECTION OF CUSTOM HOMES





hello.

This is what you've been searching for. The chance to create the home you've always wanted. With beautiful executive residences boasting innumerable customization options, and an acclaimed Ontario homebuilder guiding you every step of the way. Now, introduce yourself to Brooklin's finest new home opportunity. Surrounded by greenspace and moments to the city's most demanded amenities. So say goodbye to standard, and say **hello Brooklin.**



Experience home like never before with beautifully crafted interior spaces designed just for you. With **hello Brooklin**, browse a catalogue of unmatched interior design choices suited to every homebuyer. Whatever your taste or style, you can personalize almost every inch of your home in Brooklin's anticipated new home community.

A black and white photograph of three children running away from the camera through a field of tall grass. The child in the foreground is a boy in a dark t-shirt, followed by a girl in a light-colored shirt, and a smaller child in the distance. The background shows a line of trees under a dark sky.

# COME HOME TO CUSTOM





# YOUR DREAM COME TRUE

Elegance and exclusivity await at Carnwith Dr. W., just east of Way St. in central Brooklin. Offering a limited collection of exceptionally designed residences on lots surrounded by woodlands, no dream home is out of reach at hello Brooklin. These large plots provide the perfect setting for illustrious residences up to 4,445 sq. ft. — the ideal template for creating the home you've always wanted.

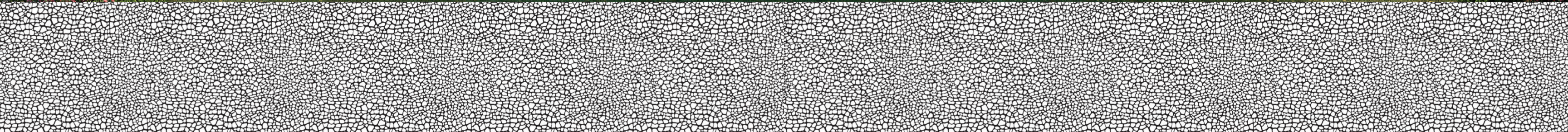




# AN EXCLUSIVE COLLECTION OF CUSTOM HOMES

Choose from five distinct architectural designs and layouts while working alongside Fulton Homes to customize the interiors to your exact taste. Indulge in spacious 2-storey executive residences featuring fortuitous open-concept designs, the flexibility of a finished basement, stunning deck & backyard areas, sizable 2-car garages, and so much more. Better still, enjoy all of it with the added luxury of nearly unlimited personalization options.

FPO





# NOTHING FITS BETTER THAN CUSTOM



Experience home like never before with beautifully crafted interior spaces designed just for you. With hello Brooklin, browse a catalogue of unmatched interior design choices suited to every homebuyer. Whatever your taste or style, you get to choose almost every aspect of your home in Brooklin's anticipated new home community.



**Customize Layout & Function (kitchen, bath & living spaces):**

- Add/delete rooms to fit your family's needs
- Personalize spaces suit your style
- Configure layout to suit traffic flows

**Customize Finishes & Fixtures (kitchen, bath & living spaces):**

- Choose custom millwork, built-ins, and hardware tailored to your style/needs
- Choose from designer plumbing fixtures, natural stones & tile options
- Personalize spaces with designer lighting fixtures in different finishes

**Customize Electrical & Automation Systems**

- Control everything in your home: music, entertainment, comfort, lighting, security, connectivity, blinds, outdoor living and energy use
- Add/reconfigure/upgrade electrical plugs and outlets
- Add personal elevators

**Specialty Room Considerations**

- Games room/home theatres/gyms/golf simulator bays options
- Custom garage built-ins/storage tailored to your style/needs









**WHEN YOU LOVE WHAT YOU DO,**  
**IT SHOWS...**



Building has been our passion for over 3 generations. Creating exceptional and fully-customizable family homes has been the foundation of our business since the very beginning. From creating visionary new homes to designing complete communities in impeccable locations, we at Fulton Homes always have two top priorities — quality and family.





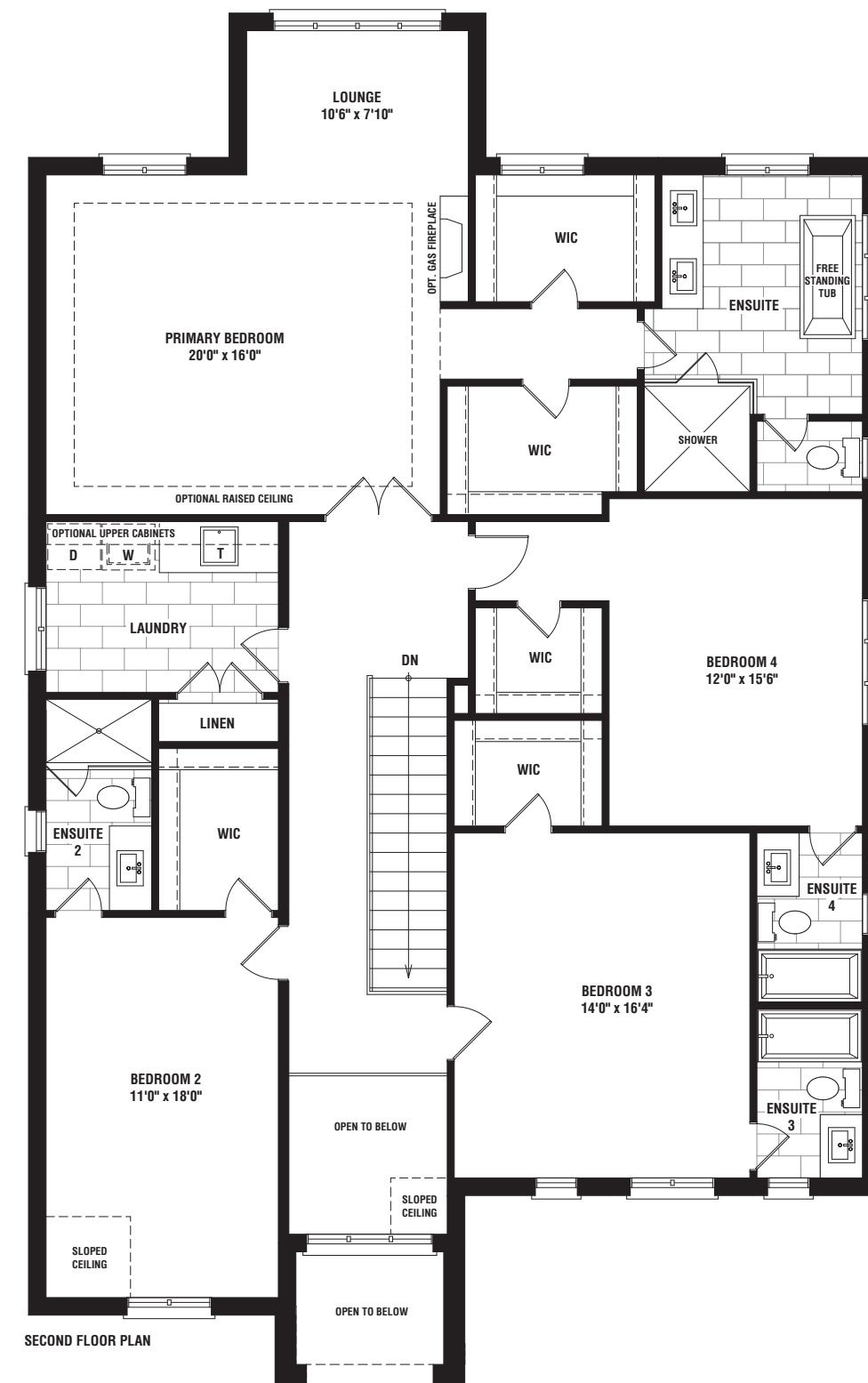
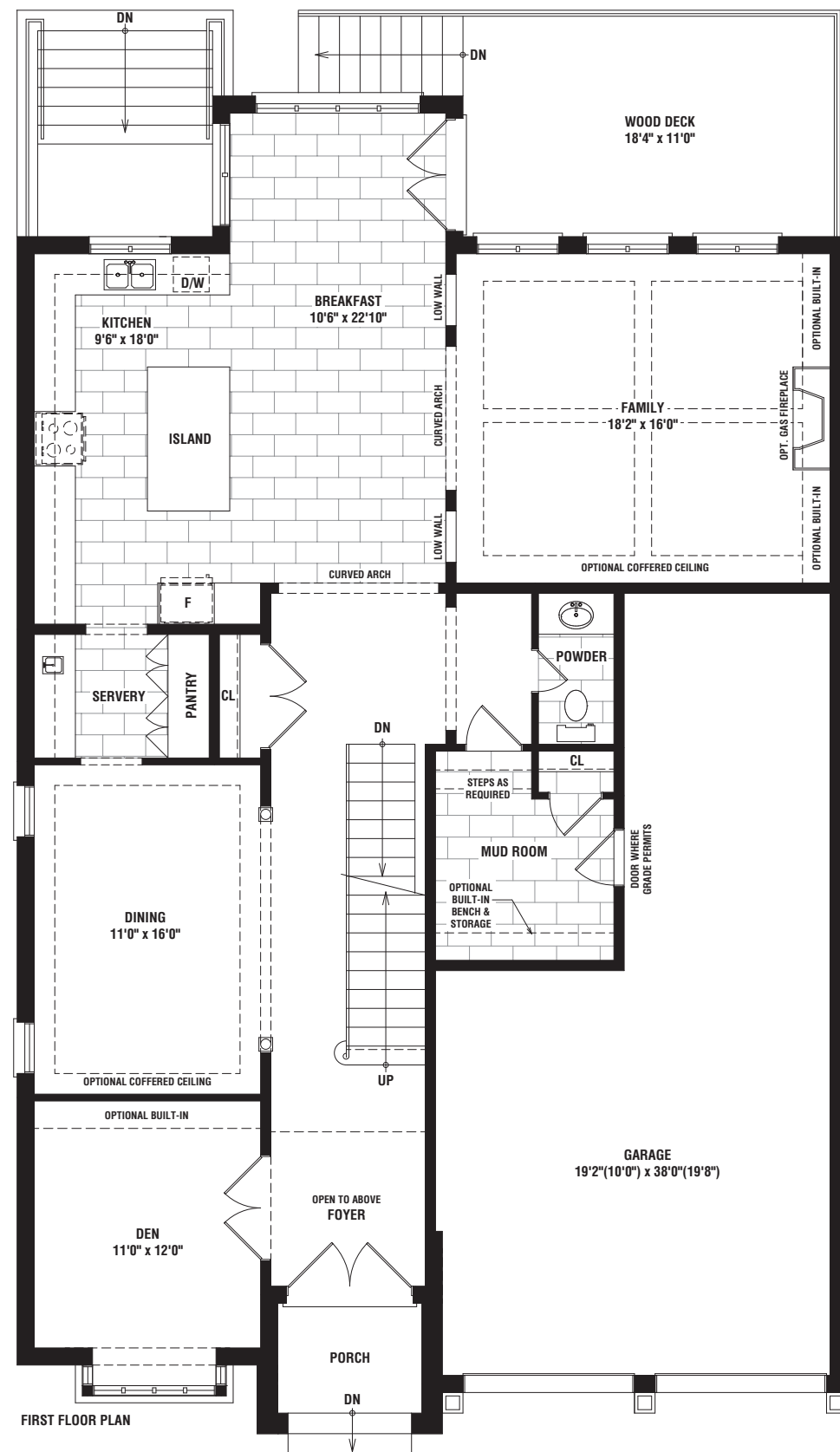
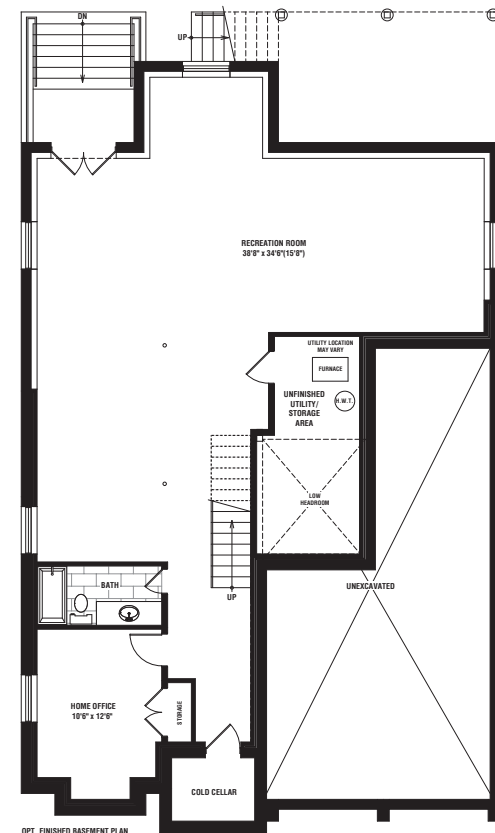
# BEDFORD

ELEV. A 3860 SQ. FT.





**BEDFORD** ELEV. A 3860 SQ. FT.





# BEDFORD

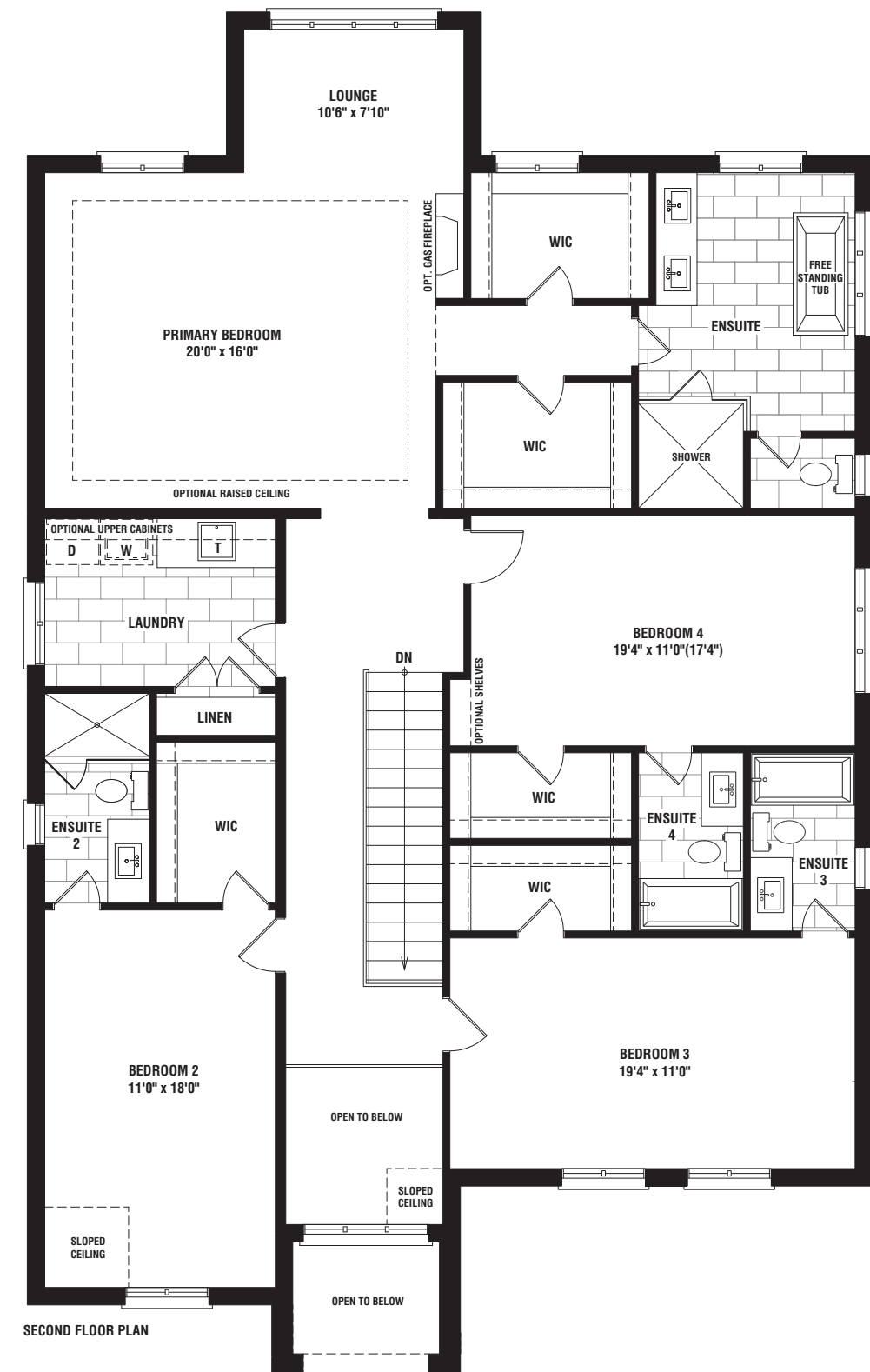
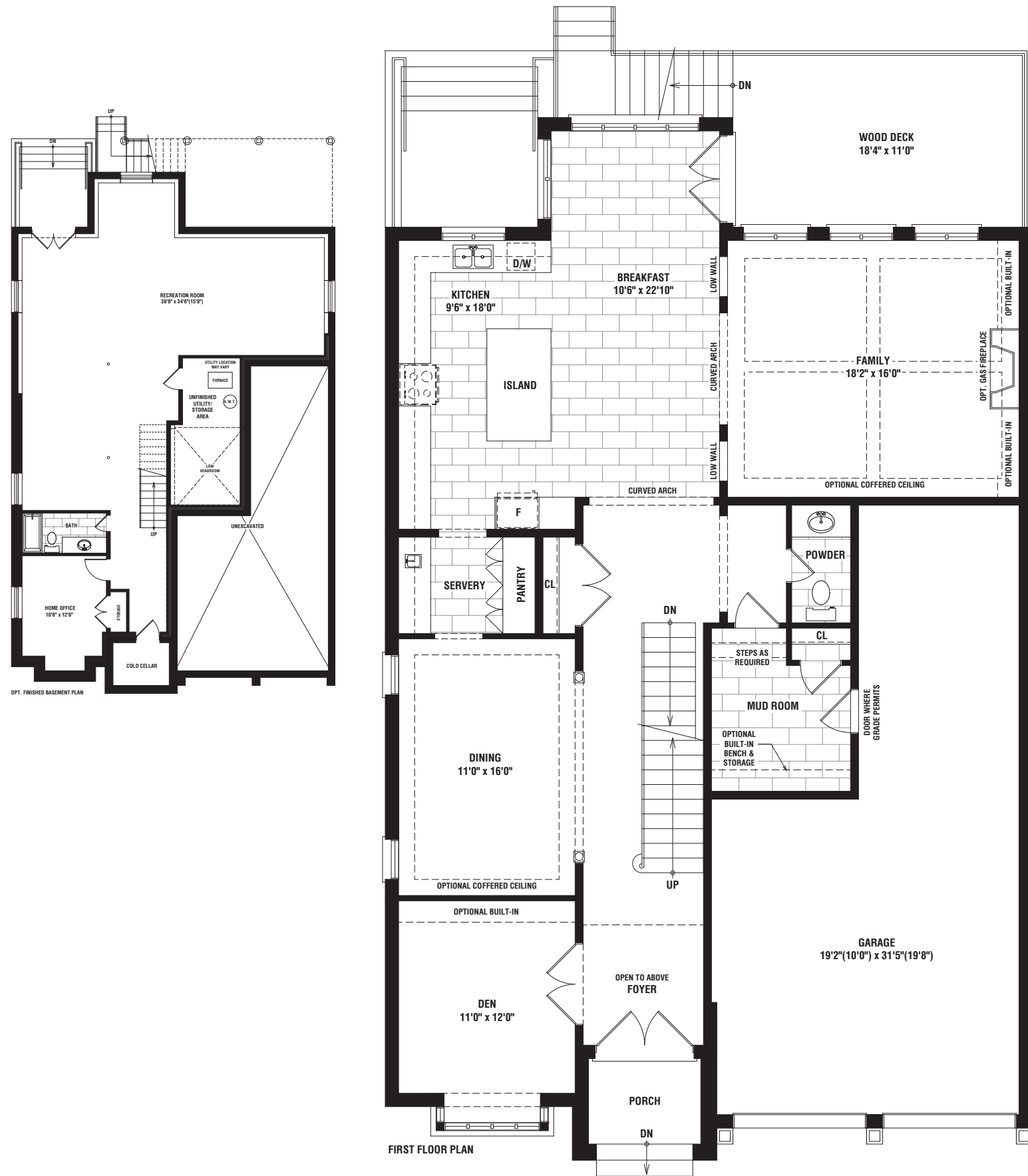
ELEV. B 3860 SQ. FT.





# BEDFORD

ELEV. B 3860 SQ. FT.





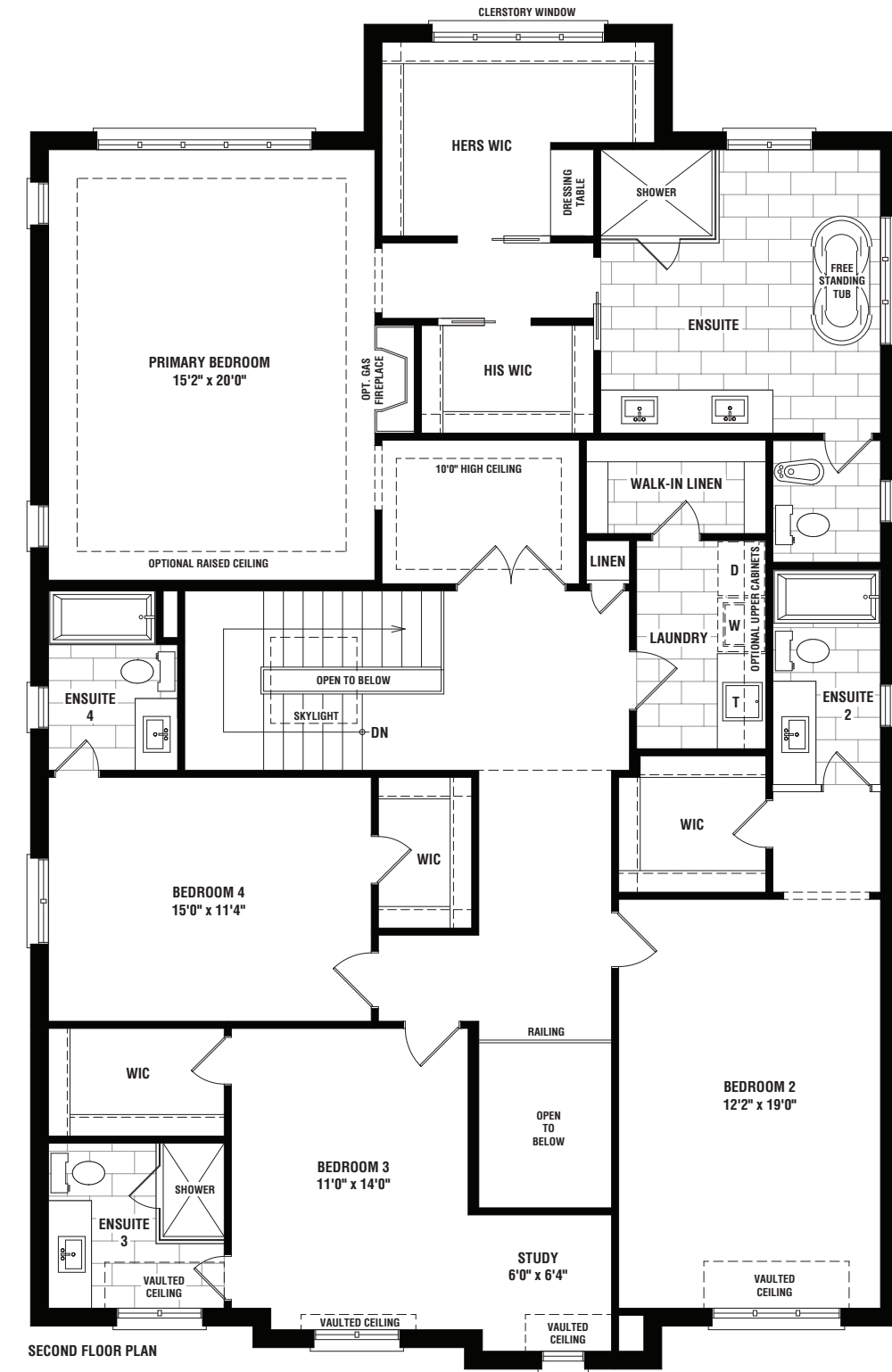
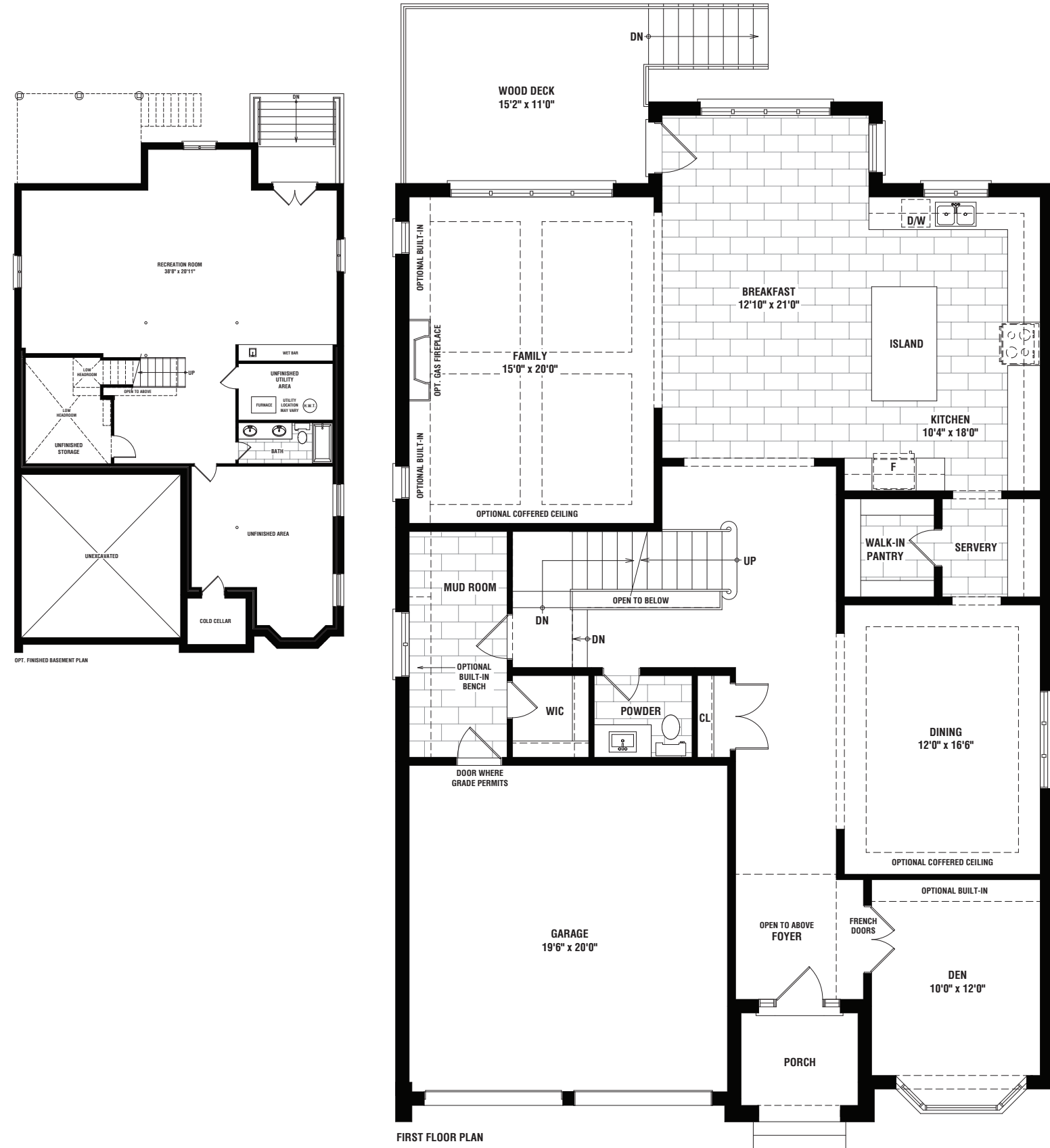
# FLATBUSH

ELEV. A 4220 SQ. FT.





**FLATBUSH** ELEV. A 4220 SQ. FT.



Materials, specifications and floor plans are subject to change without notice. All renderings are artist's conceptions. All floor plans are approximate dimensions. Actual usable floor space may vary from the stated floor area. E. & O.E. 4210A



# FLATBUSH

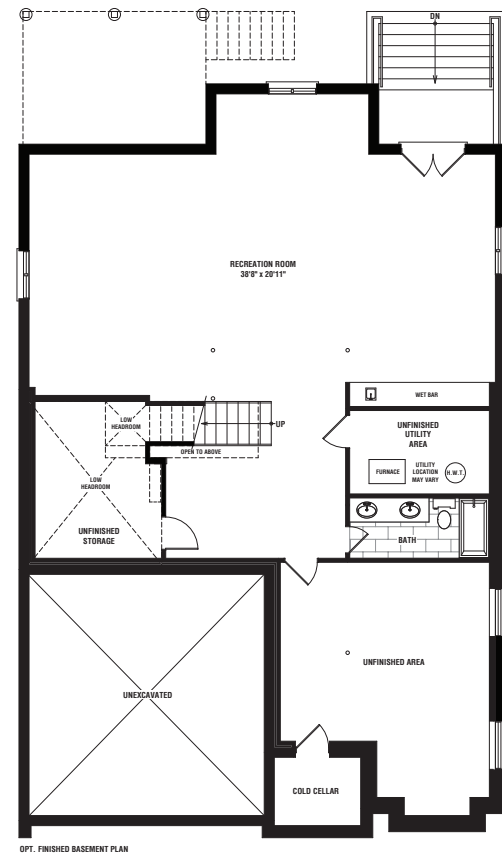
ELEV. B 4220 SQ. FT.



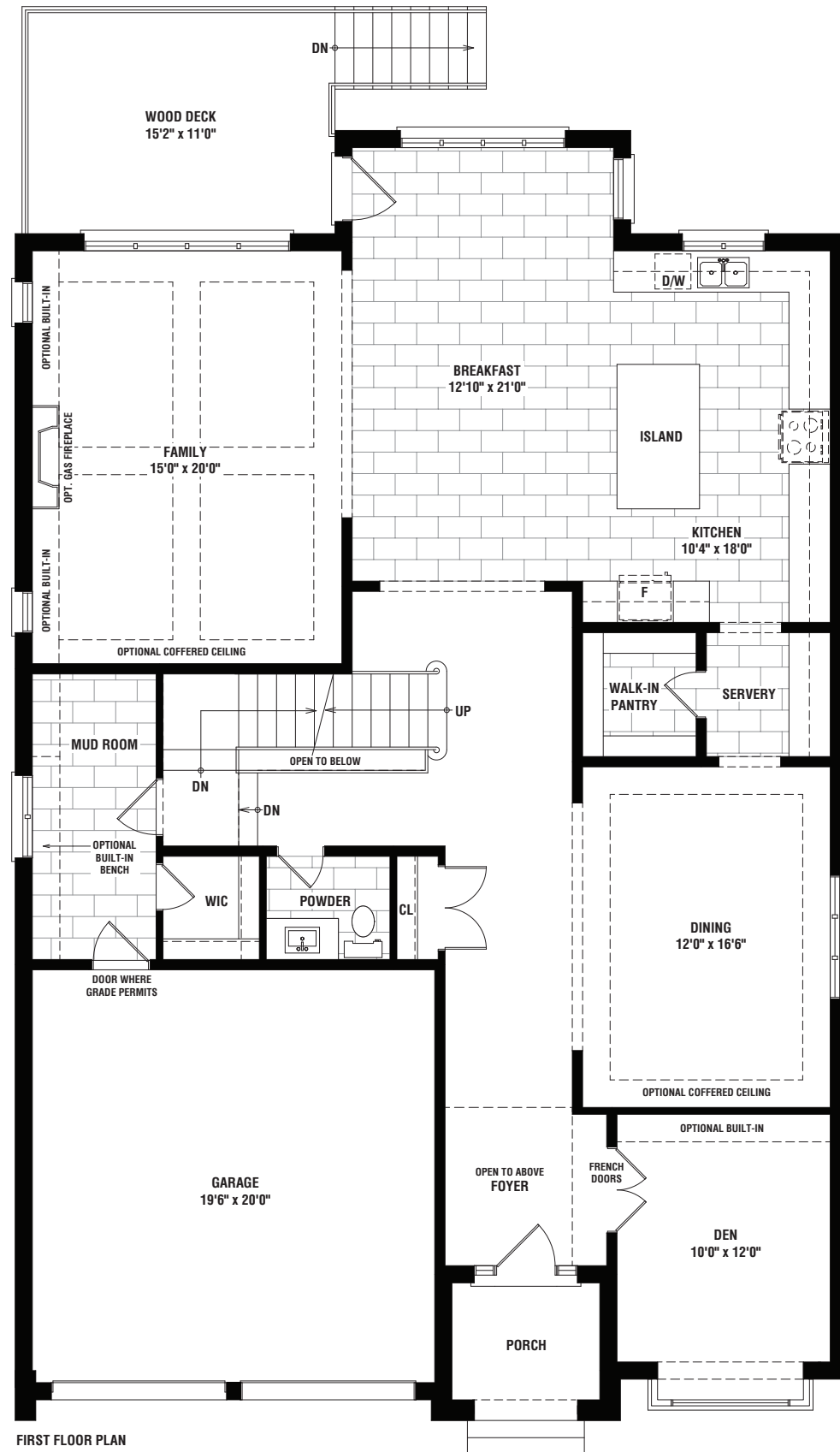


## FLATBUSH

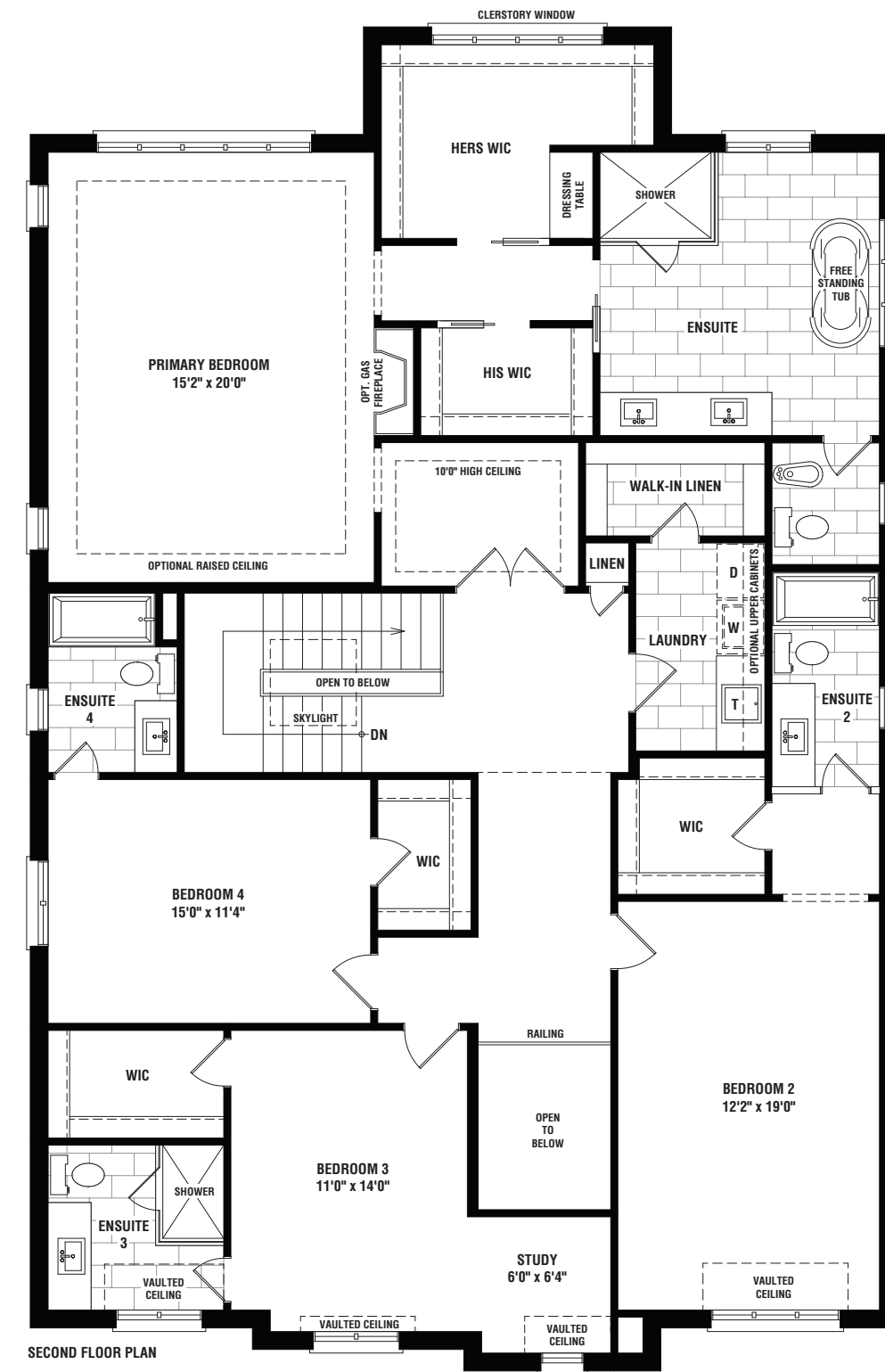
ELEV. B 4220 SQ. FT.



OPT. FINISHED BASEMENT PLAN



### FIRST FLOOR PLAN



## SECOND FLOOR PLAN

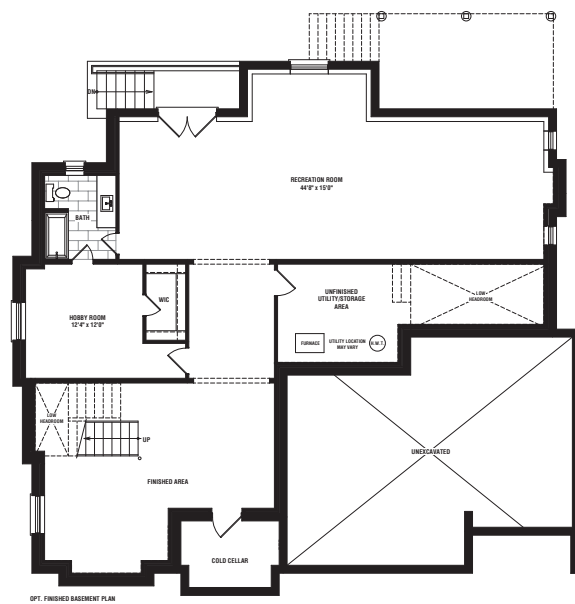
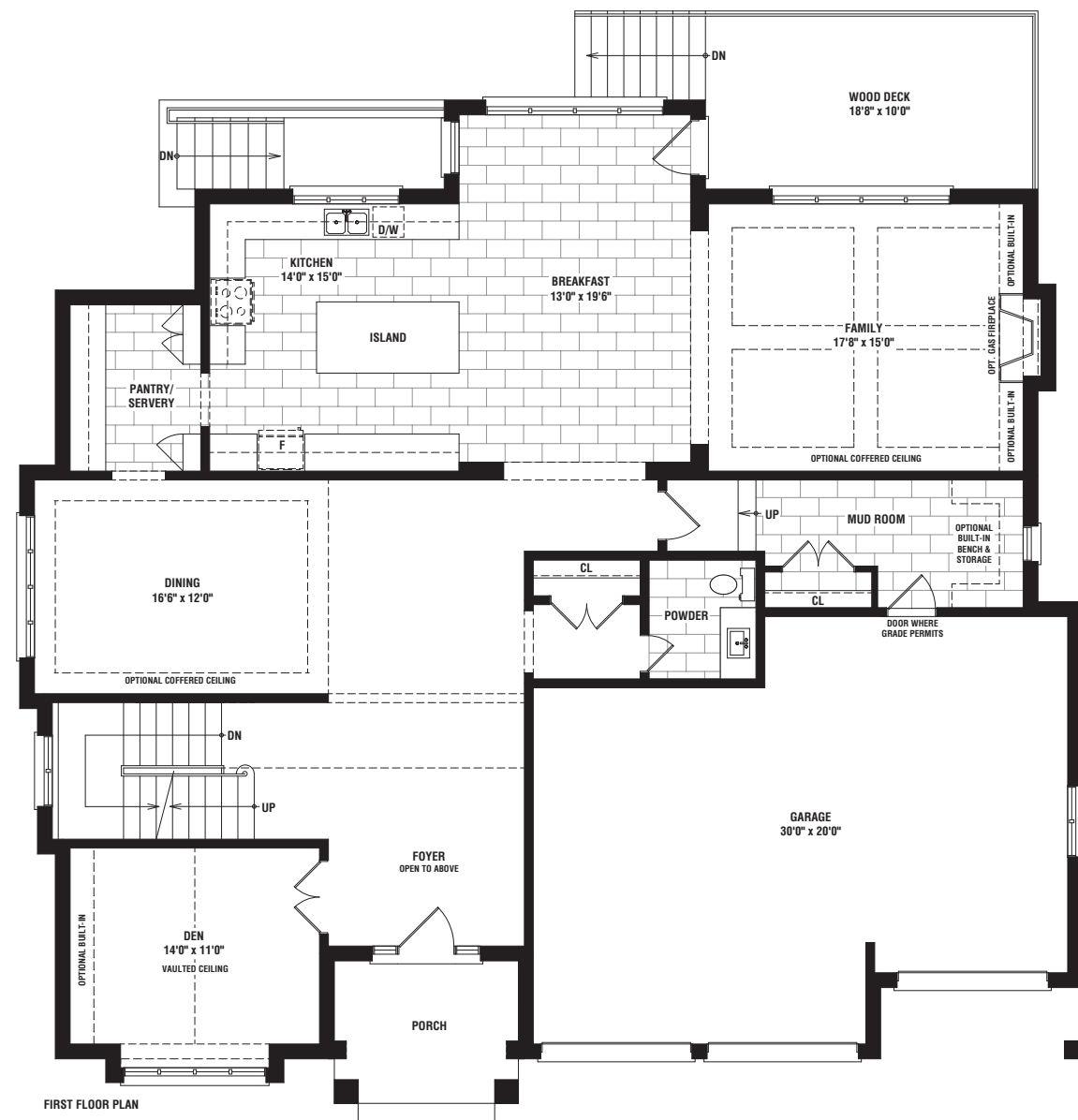


# ATLANTIC

4485 SQ. FT.















FULTON  
HOMES